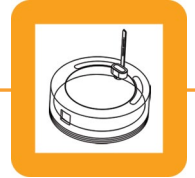


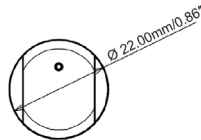
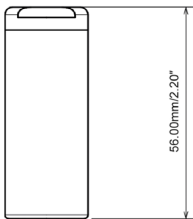
GMPF Mini RF



Real Time Temperature Data Logger -60°C to +85°C



- + Collects and transmits real time temperature to XpertLog Software
- + ITS-90 calibration coefficients are stored in the internal memory
- + Complies with FDA 21 CFR Part 11
- + Network ready: multiple users, centralized, server database, active directory authentication
- + Calibration can be performed on site
- + Can be remotely activated



Sensor type	4 wires thin
- flexible	150 mm (6") or custom length
- sensor size	1.2 x 2.8 mm (0.05 x 0.11")
- cross section	1.13 mm ² (0.00175 inch ²)
Operating Range	
- body	-60°C to +85°C
- sensor	-80°C to +140°C
Accuracy	±0.1°C from -60 to +85°C
Resolution	0.01°C
Memory capacity	32,000 data points
Memory type	non volatile
Sampling rate	1 sec to 24 hours
Transmission	simultaneous: maximum 20 loggers
	sequential: unlimited
Internal clock drift	4 sec / 24 h @ 23°C
Mechanical	
- material	Peek 1000 - FDA compliant
- enclosure	IP-68
- weight	19 g (0.67 oz)
- diameter	22 mm (0.86")
- height	56 mm (2.20")
Power	1 x Lithium batteries, 0.35 g/each Lithium content classified UN3091 under IATA DGR section 3.9.2.6 compliant with ICAO/IATA packing instructions 970,user replaceable
Battery lifetime	Up to 6 months, based on usage
Antenna	Internal
Wireless range	121 m (400 feet)
Radio frequency	2.4 Ghz ISM band
Access point	USB to computer
Calibrations	Programs and reads unlimited number of loggers Factory Calibrations: traceable NIST/COFRAC - ITS-90 coefficients stored in the internal memory User Calibrations: close loop calibration using XpertLog® software
Certification	Health Safety: EN 60950-1 / 2006 EMC: EN 60601-1-2 / 2007 RF: EN 300440-2 v1.3.1 (2009-03)

Order Reference
GMPF_RF_Mini_THIN
GMPF_RF_Mini_THIN_1m

Standard Calibration Points

- -60°C
- 0°C
- 85°C

