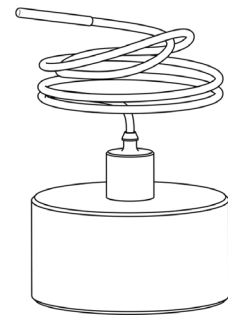
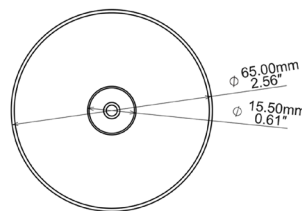
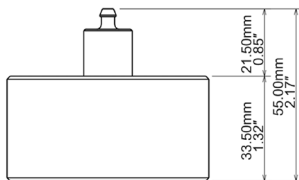


Real Time Wireless Temperature Data Logger with Flexible Sensor

-90°C to +140°C



- + Collects and transmits real time temperature to XpertLog Software
- + ITS-90 calibration coefficients are stored in the internal memory
- + Complies with FDA 21 CFR Part 11
- + Network ready: multiple users, centralized, server database, active directory authentication
- + Calibration can be performed on site
- + Can be remotely activated



Sensor type	4 wires PT-100
- flexible	430 mm (17")
- customized	up to 5000 mm (195")
- Sensor size	1.5 x 8 mm (0.06 x 0.315")
- cross section	1.77 mm ² (0.0027 inch ²)
Operating Range	
- body	-90°C to +140°C
- Sensor	-200°C to +200°C
Accuracy	±0.1°C from -90°C to 140°C
Resolution	0.01°C
Memory capacity	32,000 data points
Memory type	non volatile
Sampling rate	1 sec to 24 hours
Transmission	simultaneous: maximum 20 loggers sequential: unlimited
Internal clock drift	4 sec / 24 h @ 23°C
Mechanical	
- material	Peek 1000 - FDA compliant
- enclosure	IP-68
- weight	115g (4.06 oz)
- diameter	65 mm (2.56")
- height	55 mm (2.17")
Power	2 x Lithium batteries, 0.35 g/each Lithium content classified UN3091 under IATA DGR section 3.9.2.6 compliant with ICAO/IATA packing instructions 970, user replaceable Up to 6 months, based on usage
Battery lifetime	
Antenna	Internal
Wireless range	121 m (400 feet)
Radio frequency	2.4 Ghz ISM band
Access point	USB to computer
Calibrations	Programs and reads unlimited number of loggers Factory Calibrations: traceable NIST/COFRAC - ITS-90 coefficients stored in the internal memory User Calibrations: closed loop calibration using XpertLog® software
Certification	Health Safety: EN 60950-1 / 2006 EMC: EN 60601-1-2 / 2007 RF: EN 300440-2 v1.3.1 (2009-03)

Order Reference

- GMP-RF-F
- GMP-RF-F-1m
- GMP-RF-F-1.2m
- GMP-RF-F-2m
- GMP-RF-F-3m
- GMP-RF-F-4m
- GMP-RF-F-5m

Standard Calibration Points

- -80°C
- 0°C
- 140°C

