



Application Note

XpertLog SQL Server database behavior when network is lost

Purpose

The purpose of this document is to describe how the XpertLog software behaves if network connection is lost when it's configured to use an SQL database located on a network server.

Application

This applies to XpertLog software and connected hardware when configured to use an SQL database located on a network server.

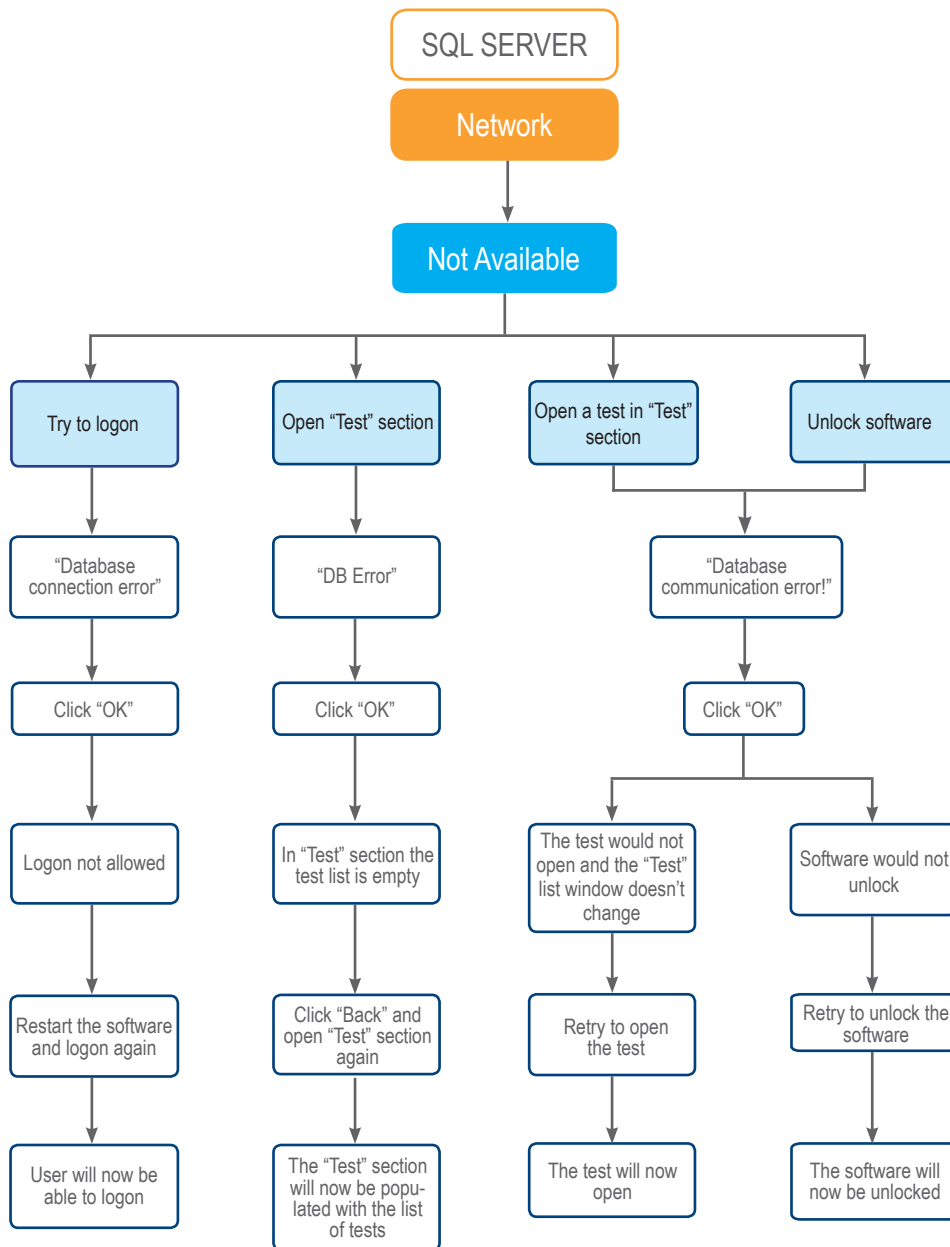
Each type of equipment is described in a different chart. The behavior in "Any Systems" chart can appear with all types of equipment - RF Data Loggers, Standard Data Loggers, XpertVal® System.



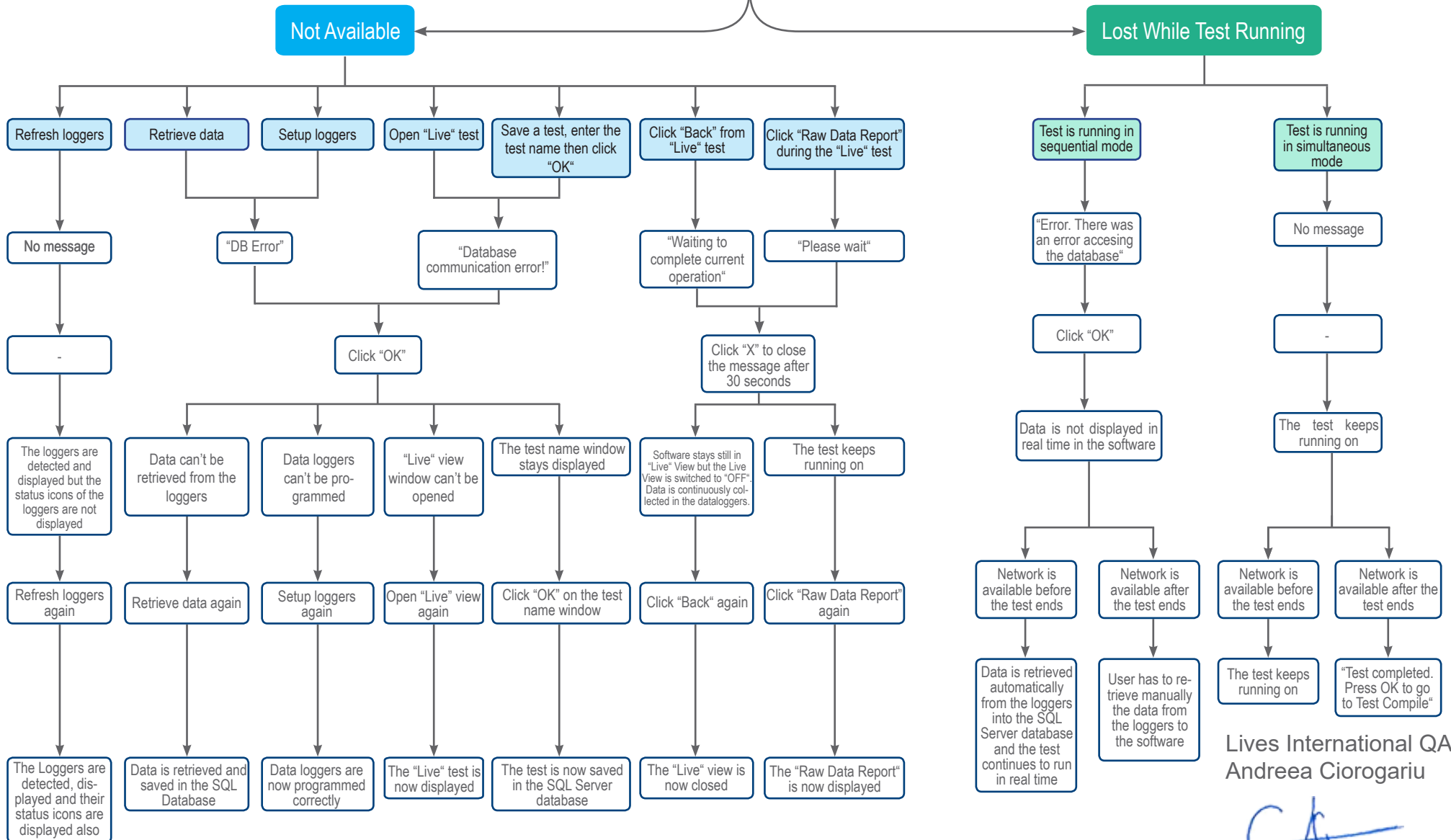
Lives International QA
Andreea Giorogariu

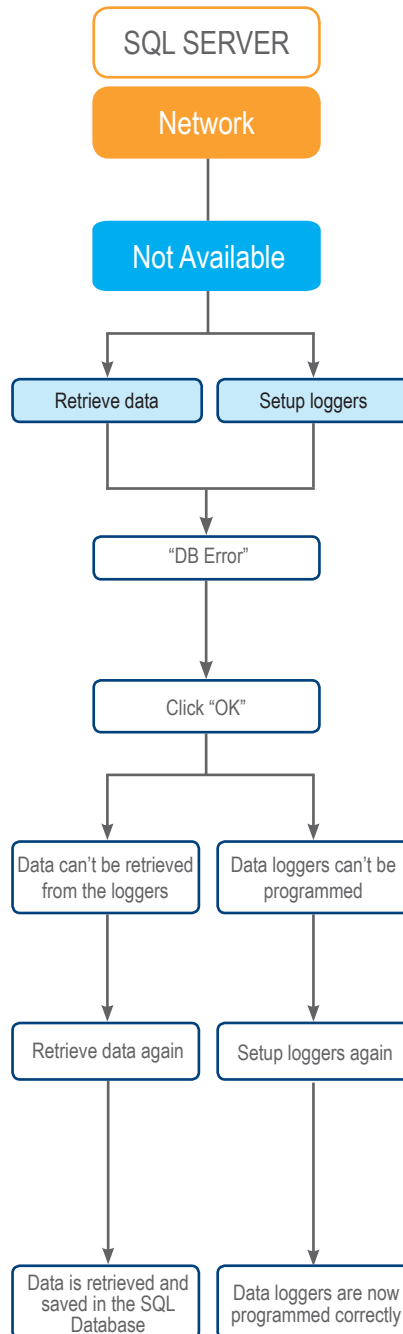
Date: 26 June 2020

V1.0 Rev. 0/26062020

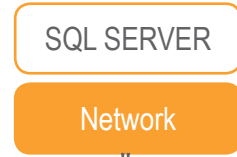


Lives International QA
Andreea Ciorogariu



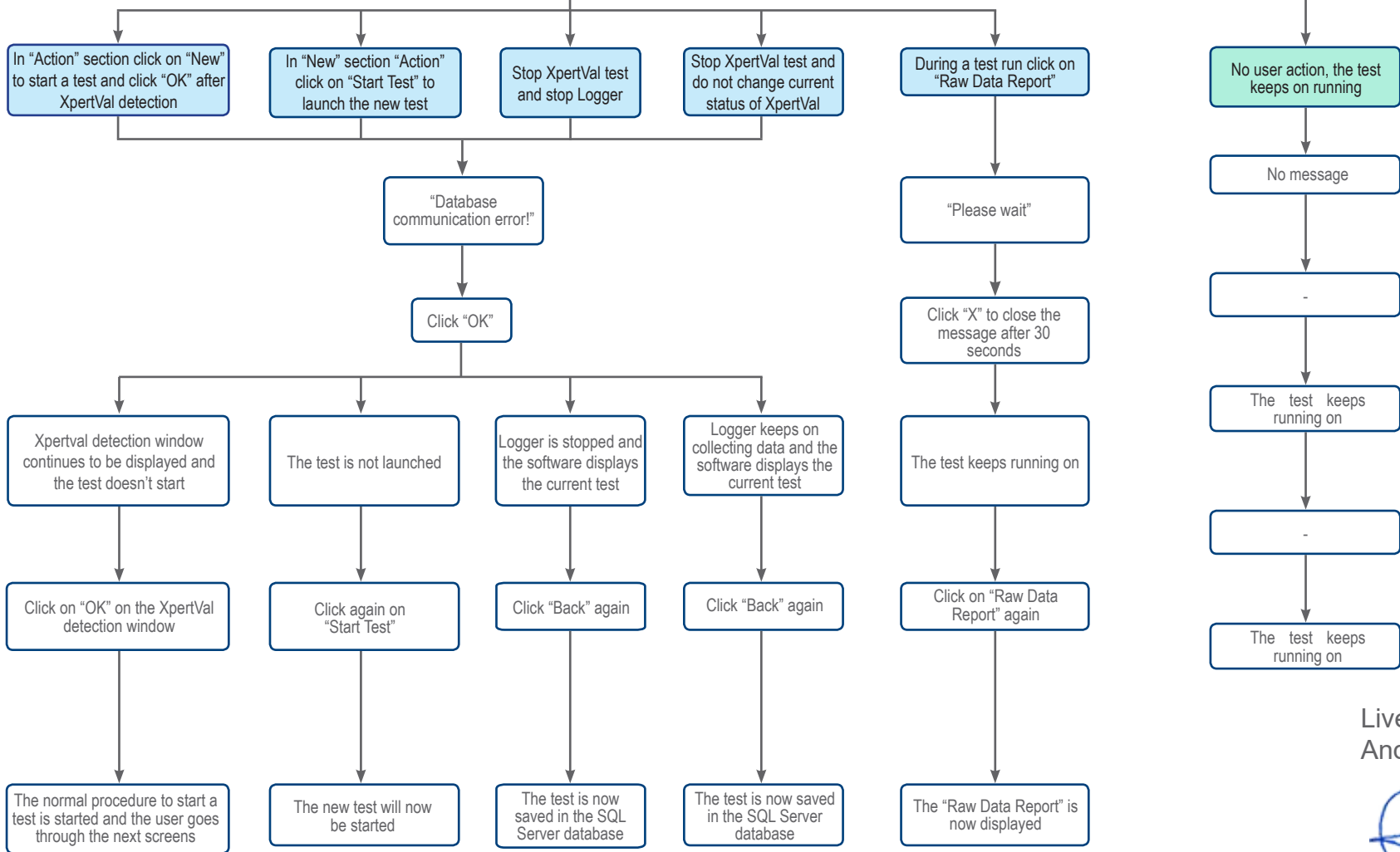


Lives International QA
Andreea Ciorogariu



Not Available

Lost While Test Running



Lives International QA
Andreea Ciorogariu

